

**ROTANODE™  
E7869X**

**Rotating Anode X-ray Tube Assembly**

- ◆ High speed rotating anode X-ray tube assembly for high energy radiographic operations.
- ◆ For the purpose of general diagnostic X-ray procedures.
- ◆ This tube has foci 1.2 and 0.6, and is available for a maximum tube voltage 150 kV.
- ◆ This tube assembly has specially processed rhenium-tungsten faced molybdenum target of 100 mm diameter anode disc and are accommodated with IEC60526 type high-voltage cable receptacles.



**General Data**

**IEC Classification (IEC60601-1:2005+A1:2012) ..... Class I ME EQUIPMENT**

**Electrical:**

Circuit:

High Voltage Generator ..... Constant Potential High-Voltage Generator  
 Grounding ..... Center-grounded

Nominal X-ray Tube Voltage:

Radiographic ..... 150 kV

Nominal Focal Spot Value:

Large Focus ..... 1.2  
 Small Focus ..... 0.6

Nominal Anode Input Power (at 0.1s) ..... See rating charts

	180 Hz	60 Hz	50 Hz
Large Focus	100 kW	58 kW	53 kW
Small Focus	40 kW	23 kW	21 kW

Nominal Radiographic Anode Input Power:

	180 Hz	60 Hz	50 Hz
Large Focus	100 kW	58 kW	53 kW
Small Focus	40 kW	23 kW	21 kW

★The information contained herein is presented only as a guide for the application of our products. No responsibility is assumed by Canon Electron Tubes & Devices Co., Ltd. (CETD) for any infringements of patents or other rights of the third parties which may result from its use. No license is granted by implication or otherwise under any patent or patent rights of CETD or others.  
 ★The information contained herein may be changed without prior notice. It is therefore, advisable to contact to CETD before processing with the design of equipment incorporating this product.

**Motor Ratings:**

Stator: XS-AG

		Starting		Running	
Driven Frequency	[Hz]	180	50/60	180	50/60
Input Power	[W]	3710	800	200	90
Voltage <sup>3) 5)</sup>	[V]	420	190	80	48
Current <sup>4)</sup>	[A]	9.6	10.2	3.0	2.2
Min. Speed Up <sup>1) 7)</sup>	[s]	1.2	0.8	-	-
Capacitor	[ $\mu$ F]	6	44	6	44
Min. Braking <sup>2) 7)</sup>	[s]	2.0 (DC 100V)			

Note 1) The speed up time from normal speed to high speed is 2/3 times of the specified speed up time from 0 to high speed, which is described on motor rating table.

2) To be applied for high speed rotation.

3) Applied voltage between common and main terminal.

4) Common current.

5) The every applied voltage must be never exceeded 110% of the above specification.

6) No more than two high speed starts per minute are permissible.

7) The speed-up time is allowed up to 110% of the above specification.

8) The generator manufacture may choose different values. The above table is one of the recommend conditions.

**Anode Speed:**

180 Hz	Minimum 9700 min <sup>-1</sup>
60 Hz	Minimum 3200 min <sup>-1</sup>
50 Hz	Minimum 2700 min <sup>-1</sup>

**Stator Resistance:**

Common-Main Winding	9.4 $\Omega$
Common-Auxiliary Winding	28.3 $\Omega$
Resistance between Housing and Low Voltage Terminals	Minimum 2 M $\Omega$
Normal Operating Range of the Housing Temperature	16 ~ 75 °C
Mode of Operation	Intermittent

**Mechanical:**

Dimensions	See dimensional outline
Overall Length	496 mm
Maximum Diameter	195 mm
Target:	
Anode Angle	12 degrees
Diameter	100 mm
Construction	Rhenium-Tungsten faced Molybdenum
Filtration:	
Permanent Filtration	1.1 mm Al / 75 kV IEC60522:1999
Available Additional Filter combination (0.4 - 1.5 mm)	Maximum 2.6 mm Al / 75 kV
Radiation Protection (In accordance with IEC60601-1-3:2008):	
Leakage Technique Factor	150 kV, 4 mA
X-ray Coverage	430 × 430 mm at SID 1000 mm
Weight (Approx.)	24 kg
High Voltage Receptacle	To meet the requirements of IEC60526 Corrigendum1:2010
Cooling Method	Natural or forced air
Tube Housing Model Number	XH-112V

## Absolute Maximum and Minimum Ratings (At any time, these values must not be exceeded)

Maximum X-ray Tube Voltage:	
Radiographic .....	150 kV
Between Anode (or Cathode) and Ground .....	75 kV
Minimum X-ray Tube Voltage .....	40 kV
Maximum X-ray Tube Current .....	
Large Focus .....	See rating charts
Small Focus .....	1000 mA
Small Focus .....	500 mA
Maximum Filament Current:	
Large Focus .....	5.8 A
Small Focus .....	5.1 A
Filament Voltage:	
Large Focus (At maximum filament current 5.8 A) .....	12.4 ~ 16.7 V
Small Focus (At maximum filament current 5.1 A) .....	9.3 ~ 12.5 V
Filament Frequency Limits .....	0 ~ 25 kHz
Continuous Anode Input Power .....	300 W (420 HU/s)
Thermal Characteristics:	
Anode Heat Content .....	420 kJ (600 kHU)
Maximum Anode Heat Dissipation .....	1750 W (2465 HU/s)
X-ray Tube Assembly Heat Content .....	1420 kJ (2000 kHU)
Nominal Continuous Input Power:	
Without Air-circulator .....	278 W (23 kHU/min)

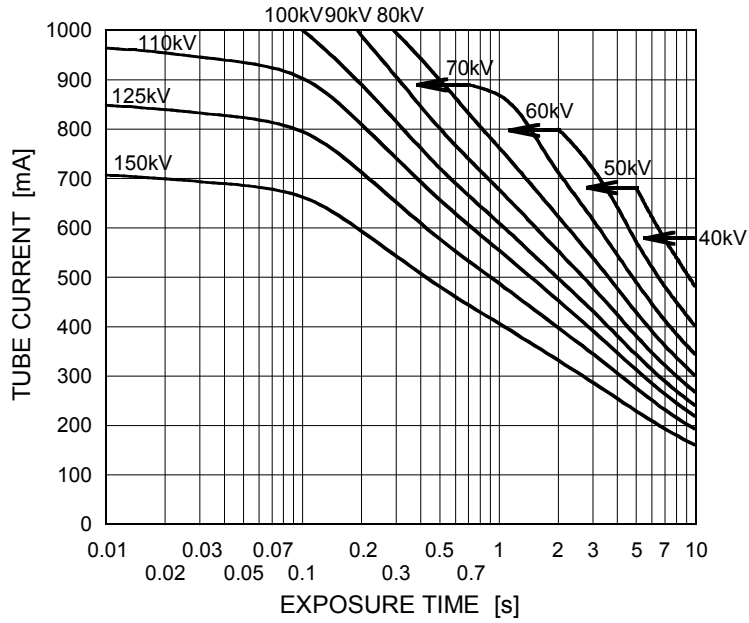
## Environmental Limits

Operating Limits:	
Temperature .....	10 ~ 40°C
Humidity .....	30 ~ 85 %
	(No condensation)
Atmospheric Pressure .....	70 ~ 106 kPa
Shipping and Storage Limits:	
Temperature .....	-20 ~ 70°C
Humidity .....	20 ~ 90 %
	(No condensation)
Atmospheric Pressure .....	50 ~ 106 kPa

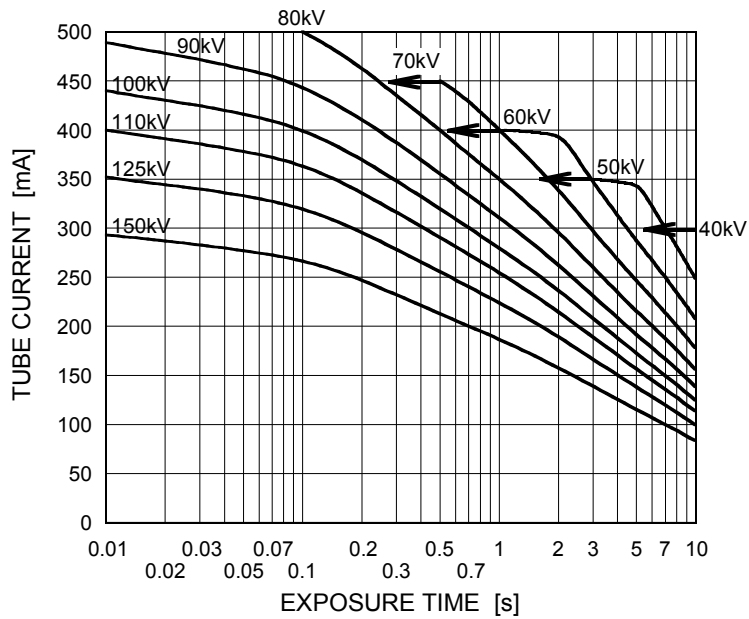
## Maximum Rating Charts (Absolute Maximum Rating Charts)

Conditions: Tube Voltage  
Constant Potential High-Voltage Generator  
Stator Power Frequency 180Hz

Nominal Focal Spot Value: 1.2 ■



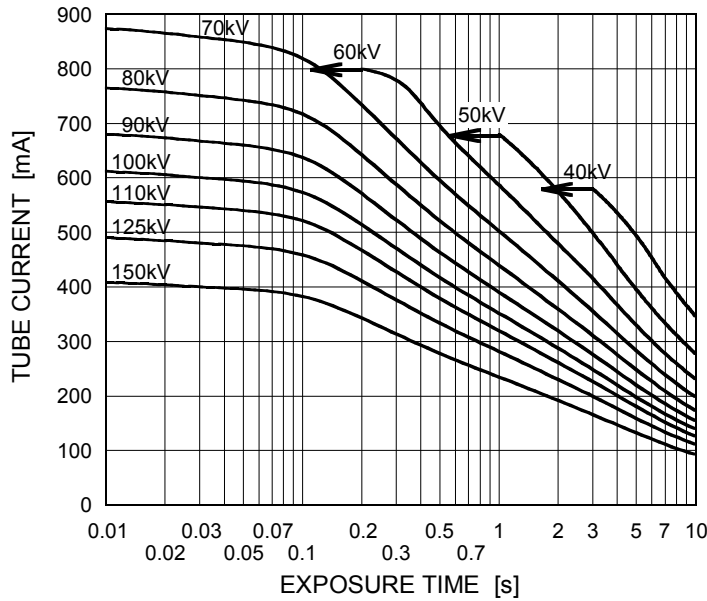
Nominal Focal Spot Value: 0.6 □



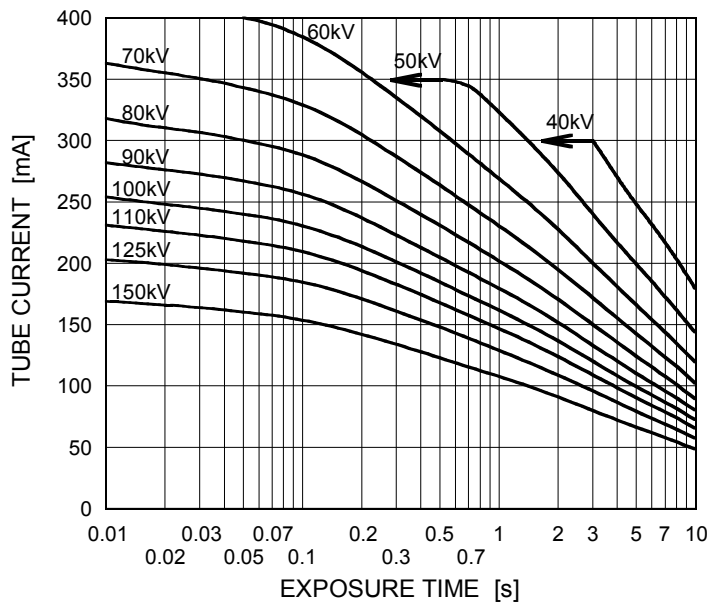
## Maximum Rating Charts (Absolute Maximum Rating Charts)

Conditions: Tube Voltage  
Constant Potential High-Voltage Generator  
Stator Power Frequency 60Hz

Nominal Focal Spot Value: 1.2 ■



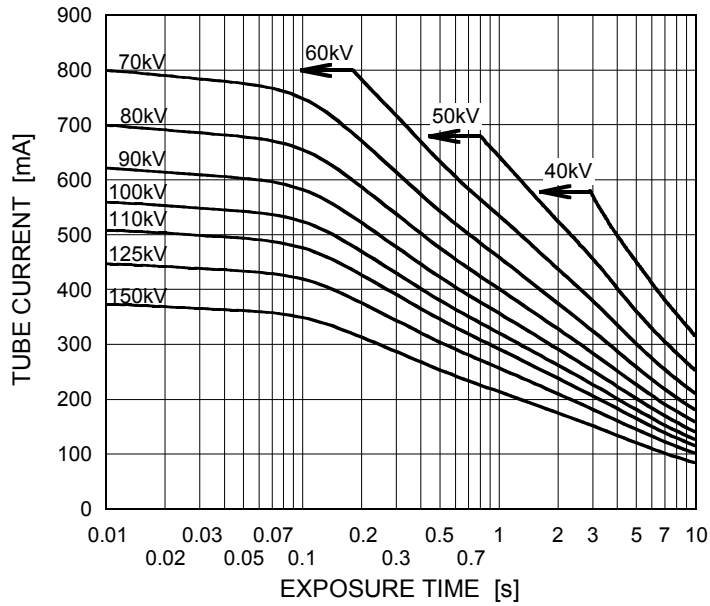
Nominal Focal Spot Value: 0.6 □



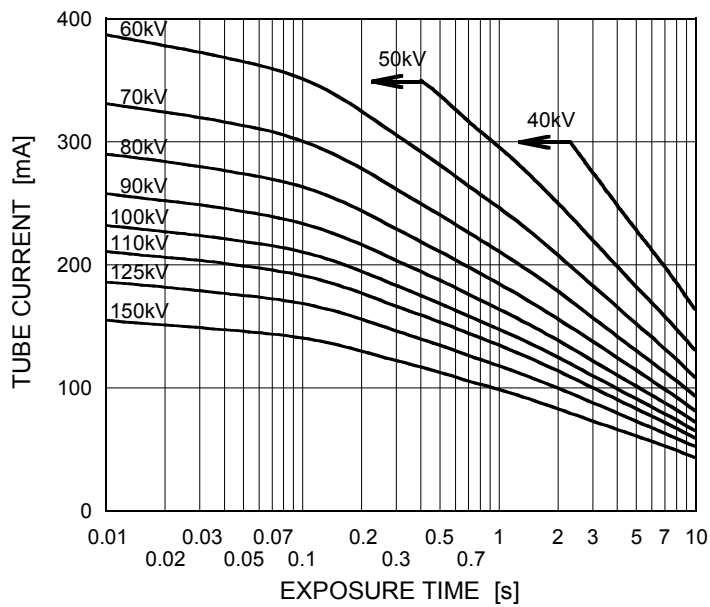
## Maximum Rating Charts (Absolute Maximum Rating Charts)

Conditions: Tube Voltage  
Constant Potential High-Voltage Generator  
Stator Power Frequency 50Hz

Nominal Focal Spot Value: 1.2 ■



Nominal Focal Spot Value: 0.6 □

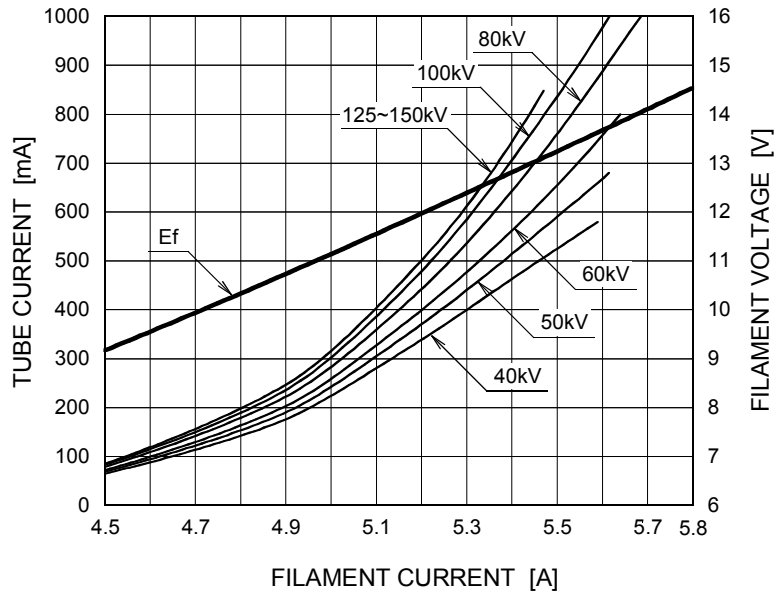


Refer to IEC60613:2010

## Emission & Filament Characteristics

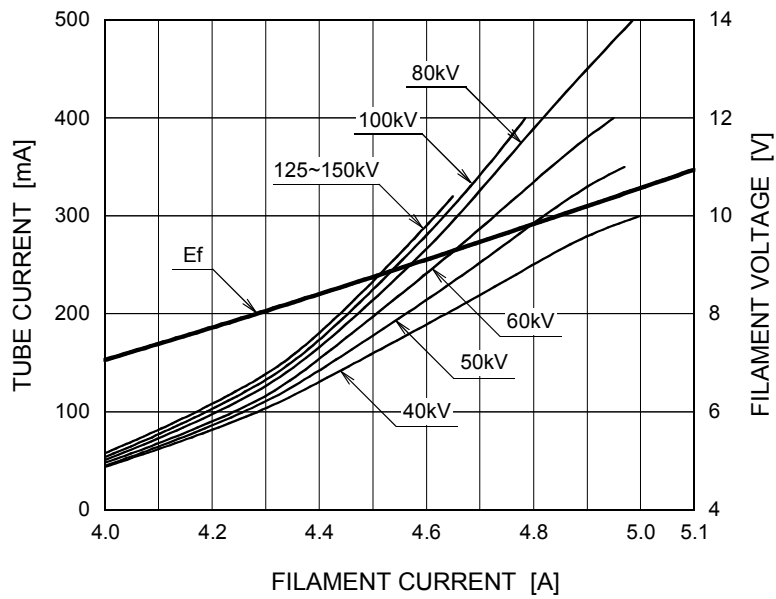
Constant Potential High-Voltage Generator

Nominal Focal Spot Value: 1.2 ■



For Reference Only

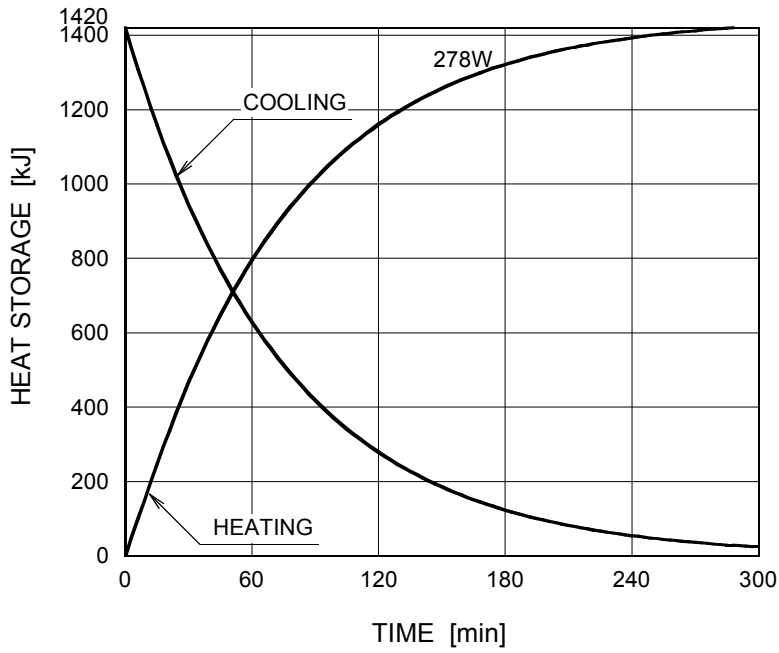
Nominal Focal Spot Value: 0.6 □



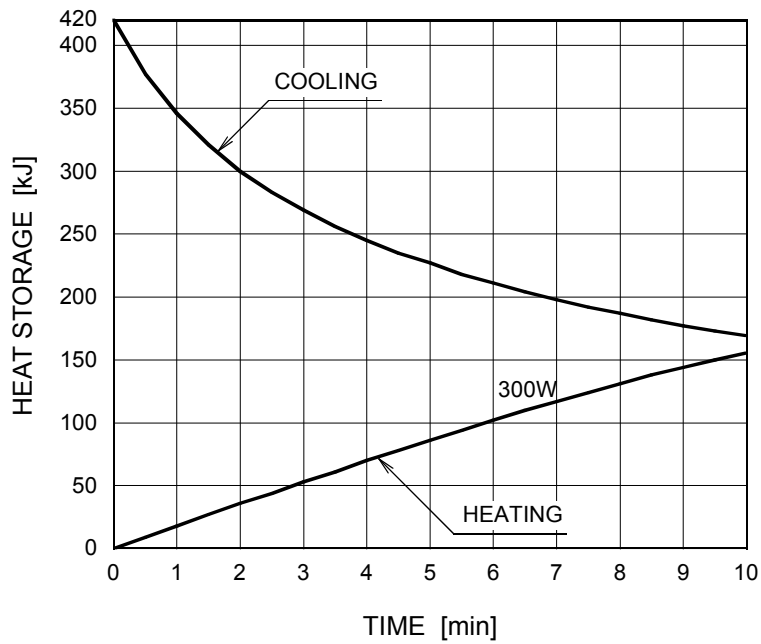
For Reference Only

## Thermal Characteristics

X-ray Tube Assembly Heating / Cooling Curve



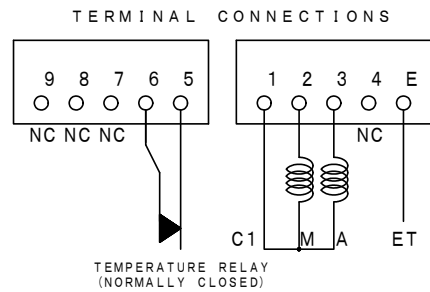
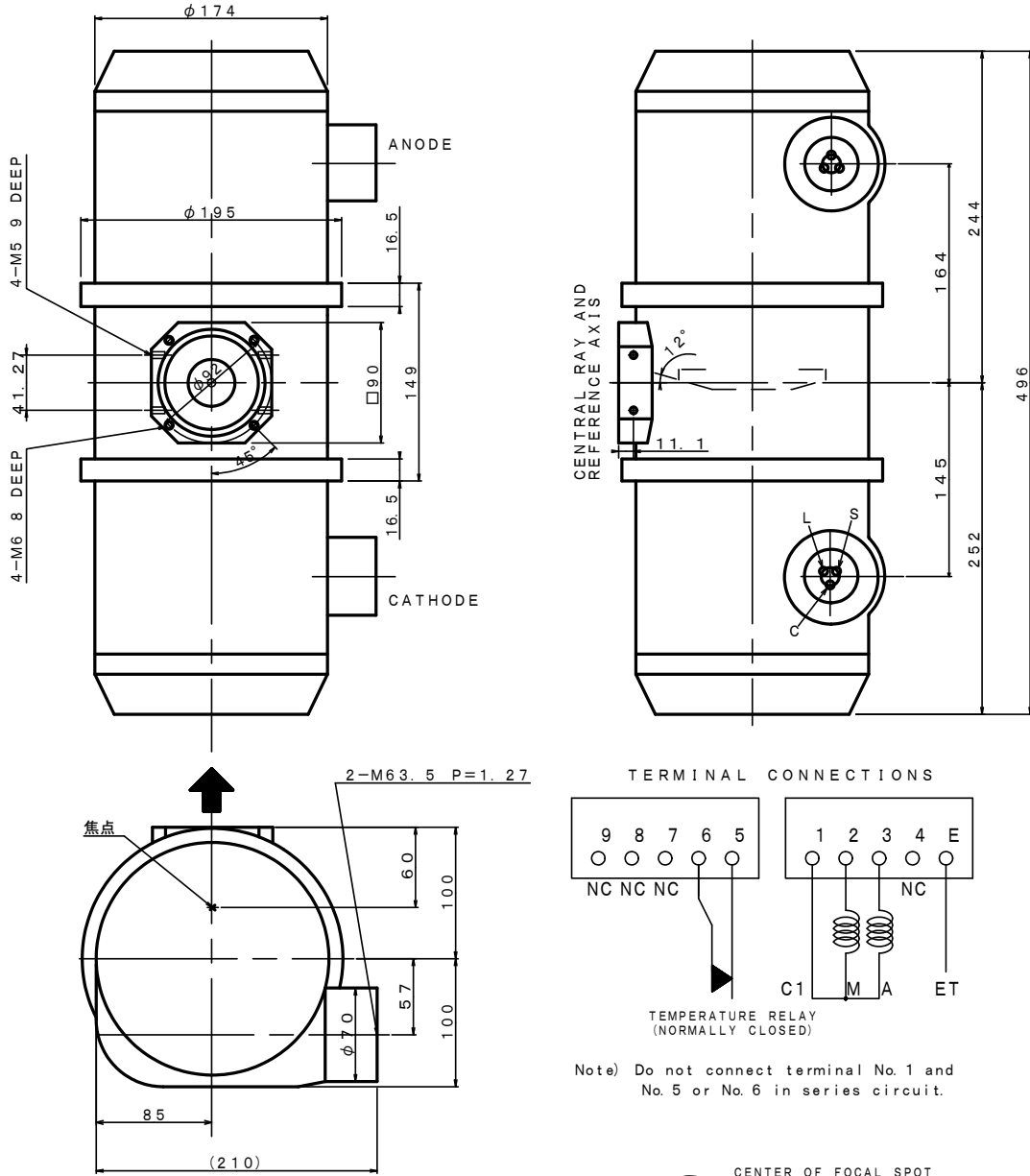
Anode Heating / Cooling Curve



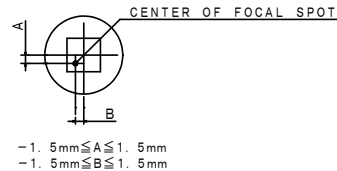


### Dimensional Outline

Unit: mm



Note) Do not connect terminal No. 1 and No. 5 or No. 6 in series circuit.



**EXPLANATION OF SYMBOLS**

**CATHODE TERMINAL**

- C : COMMON
- L : LARGE FOCUS
- S : SMALL FOCUS

**TERMINAL CONNECTIONS**

- C1 : COMMON
- M : MAIN WINDING OF THE STATOR
- A : AUX. WINDING OF THE STATOR
- NC : NON-CONNECTION
- ET : EARTH TERMINAL

↑ : CENTRAL X-RAY ANODE & CATHODE TERMINAL : IEC60526 TYPE



**CANON ELECTRON TUBES & DEVICES CO., LTD.**

Marketing Engineering Group, Sales Department  
1385, Shimoishigami, Otawara-shi, Tochigi 324-8550, Japan  
Tel: +81-287-26-6666 Fax: +81-287-26-6060  
<https://etd.canon>

·The head office of Canon Electron Tubes & Devices Co., Ltd. has been certified to meet all the requirements of Environmental Management System ISO14001.  
·Canon Electron Tubes & Devices Co., Ltd. has been certified to meet all the requirements of Quality Management Systems ISO9001 and ISO13485.  
Product scope is referred to the following URL. <https://etd.canon/eng/company/quality.htm>.